

Software Installation

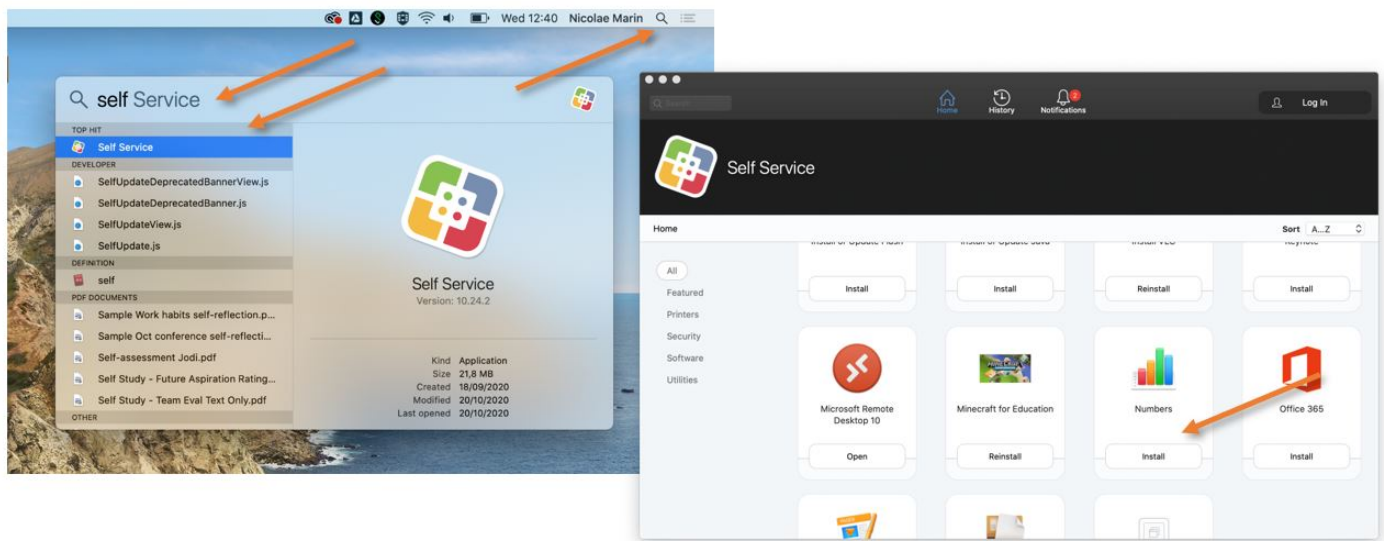
How to install the most requested software yourself.

- [Mac - Install Software - Self Service](#)
- [Windows - Install Software - Company Portal](#)

Mac - Install Software - Self Service

Self Service is a software distribution platform from where you can install apps on Mac machines.

Please search and open the Self Service portal using the Magnifying Glass in the upper-right corner. Find the app that you need in the list, and click on install.



The list of applications is constantly being updated. We are trying to add all the usually requested apps. If what you want/need to install is missing from the list, please let us know by sending an email @ IThelpdesk@isb.be, and, if possible, we will make it available for you in the Self Service portal.

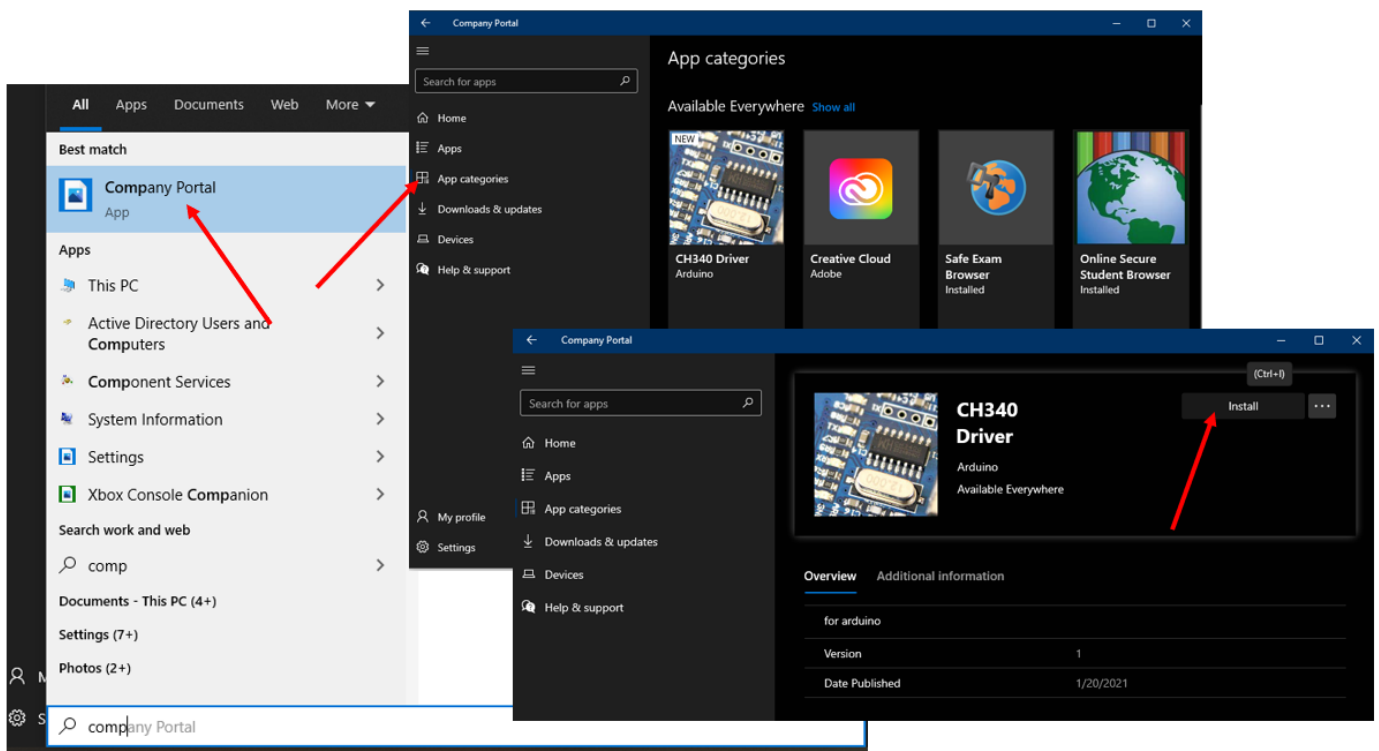
Depending on the application, the installation can take between one and 30 minutes. When done, the Install button usually changes to Reinstall. To start the installed application, search for it as you did with the Self Service.

Windows - Install Software - Company Portal

The company portal is a distribution platform from where you can install software on Windows machines yourself.

To install an app, please open company portal, find and select the software you need in the Store or Available Everywhere category, and click on install.

The list of applications is constantly being updated. We are trying to add all the usually requested apps. If what you want/need to install is missing from the list, please let us know by sending an email @ IThelpdesk@isb.be, and, if possible, we will either make it available for you in Software Center or install it remotely.



Depending on the application, the installation can take between one and 30 minutes. When done, the Install button usually changes to Reinstall. To start the installed application, search for it as you did with the Company Portal.